

WholeX pro

Whole Exome NGS kit



WholeX pro

4bases **WholeX pro** kit is designed to target the coding regions of more than **22,000** of the human genome (>99% of protein coding genes).

Mitochondrial genes (as described in **MitoMap**) are also optionally covered and can be included in the analysis as needed.

The total target size of **WholeX pro** is **40 Mb**, and the sequencing is optimized for **Nanopore's Next Generation Sequencing (NGS)** platforms.

The complete table of target genes can be accessible upon request.

TECHNOLOGY

WholeX pro kit contains all reagents needed to target and capture more than 22,000 genes (table available upon request), allowing for library multiplexing and NGS sequencing using Nanopore platforms (Table 1).

WORKFLOW

The **WholeX pro** kit is part of a capture-based family solution of 4bases molecular technologies. Its accuracy and specificity in detecting genetic variants (i.e. SNVs, CNVs), with **one of the shortest capture-based protocols available** on the market (36 hours protocol, <3 hours hands-on-time), are the key to its reliability.

Thanks to **4bases proprietary analysis platform, 4eVAR**, the clinical results are easily and efficiently accessible through a validated internal workflow.

SOFTWARE ANALYSIS

The data analysis on **4eVAR** is designed based on the characteristics and technologies of the kit used, to increase accuracy of results, and to have the complete control on the entire process.

A **complete report** including **SNVs and CNVs with ACMG classification** for variant interpretation is given per each sample. Specific links for wider yet **complete classification of detected variants** are also provided, together with **quality metrics per each sample** in the run.

VALIDATION

The **WholeX pro** kit has been validated both internally and in clinical laboratories, and the whole protocol was tested on DNA standards and on clinical samples (Figure 1).

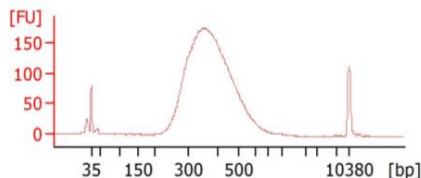


Figure 1. Agilent Bioanalyzer profile of a final **WholeX pro** library.

Table 1: **WholeX pro** kit samples per sequencing run on Nanopore sequencers.

| Flow Cell | Samples per Flow Cell (Coverage 50x) | Nanopore sequencer | Flow Cells per sequencer ** |
|-------------|--------------------------------------|----------------------|-----------------------------|
| FLO-MIN114 | 2 | MinION | 1 |
| | | GridION | Up to 5 |
| FLO-PRO114M | 4 | PromethION 2/P2 Solo | Up to 2 |
| | | PromethION 24 | Up to 24 |
| | | PromethION 48 | Up to 48 |

* The volumes of the reagents in the kit are calculated to allow the subdivision into multiples of 8 samples per analysis session. Dividing the kit differently will decrease the total number of tests that can be performed. For different settings, please contact us at support@4bases.ch.

** Multiple Flow Cells can be used during the same run session, either with different libraries or with the same library to increase sequencing depth.

ORDERING INFORMATION ***

| | Product | REF |
|--------------------------------|-----------------------------|------------------------------|
| LIBRARY AMPLIFICATION REAGENTS | WholeX pro | DC3130-16X (16 test) |
| | WholeX pro | DC3130-96X (96 test) |
| | WholeX pro AUTOMATIC | C3130A-96X (96 test) |
| MULTIPLEXING REAGENTS | UDI Primers Set A | 7001 (96 test) |
| | UDI Primers Set B | 7002 (96 test) |
| | UDI Primers Set C | 7003 (96 test) |
| | UDI Primers Set D | 7004 (96 test) |
| | UDI Primers Set 16 | 7005 (16 test) |
| NANOPORE ADAPTERS | NANO ADAPTER | M1050-6 (6 sequencing run) |
| | | M1050-24 (24 sequencing run) |

*** UDI are always included in CE-IVD kit.

The reagents required for sequencing on Nanopore platforms have to be purchased separately: contact 4bases for further information.

CONTACT US

For more detailed information regarding validated solutions for automatic library preparation, please contact us at info@4bases.it.

For the target regions of **WholeX pro** kit (.bed file, hg38), please contact us at support@4bases.it.



www.4bases.ch