

# WhoEX pro

For the analysis of the whole exome

## WhoEX pro

WhoEX pro is a kit for the sequencing of the coding regions of the genome focusing the resources on the genes most likely to affect phenotype in subjects suffering from conditions not attributable to known pathologies, in subjects affected by genetically heterogeneous diseases and complex syndromic pictures.

WhoEX pro allow the coverage of greater than **99% of protein coding genes** through a molecular protocol based on Next Generation Sequencing (NGS) technologies. The kit is validated for germline analysis (SNPs, indels, CNVs) of DNA extracted from blood or body tissues samples.

WhoEX pro kit contains all reagents required for the preparation of the capture of specifically designed probes and for the NGS analysis using Illumina.

## TECHNOLOGY

The WhoEX pro kit is part of a DNA-to-variant solution that offers streamlined content, easy-to-perform library preparation, push-button sequencing systems, and simplified data analysis.

## WORKFLOW

Library preparation follows a straightforward, capture-based protocol that can be completed in as little as 36 hours, with < 3 hours hands-on time. Resulting libraries can be normalized, pooled, and then loaded on to a flow cell for sequencing. Prepared libraries are sequenced on any compatible Illumina sequencers.

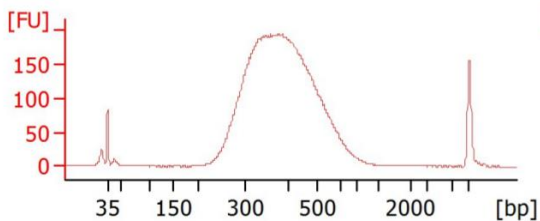


Figure 1. WhoEX pro library Bioanalyzer profile.

## WhoEX pro solution

- **Comprehensive, accurate analysis of human whole exome regions.**
- **Based on recent database releases.**
- **Coverage uniformity and sequencing efficiency.**

## SAMPLE PER RUN

Instrument	300x	100x	50x
NextSeq 550 Mid-Output Kit	4	8	16
NextSeq 550High-Output Kit	8	24	48
NovaSeq 6000 SP	16	48	96
NovaSeq 6000 S1	32	96	192
NovaSeq 6000 S2	88	192	384
NovaSeq 6000 S4	224	384	384

*\*the estimated maximum number of samples per cartridge / chip  
The optimal number of samples can be empirically estimated on the local setup*

## Ordering Information

Product	REF
WhoEX pro	RC3130-16 (16 test)
WhoEX pro	RC3130-96 (96 test)
<i>For Illumina instruments</i>	
UDI Primers Set A (96 test)	7001
UDI Primers Set B (96 test)	7002
UDI Primers Set C (96 test)	7003
UDI Primers Set D (96 test)	7004
UDI Primers Set 16 (16 test)	7005