

# ClinEx pro

For the analysis of the clinical exome

## ClinEx pro

ClinEx pro is Allowed for the identification of molecular causes in subjects suffering from conditions not attributable to known pathologies, in subjects affected by genetically heterogeneous diseases and complex syndromic pictures.

ClinEx pro is a kit for the analysis of 6000 genes through a molecular protocol based on Next Generation Sequencing (NGS) technologies. The kit is validated for germline analysis (SNPs, indels, CNVs) of DNA extracted from blood or body tissues samples.

ClinEx pro kit contains all reagents required for the preparation of the capture of specifically designed probes and for the NGS analysis using Illumina.

## TECHNOLOGY

The ClinEx pro kit is part of a DNA-to-variant solution that offers streamlined content, easy-to-perform library preparation, push-button sequencing systems, and simplified data analysis.

## WORKFLOW

Library preparation follows a straightforward, capture-based protocol that can be completed in as little as 36 hours, with < 3 hours hands-on time. Resulting libraries can be normalized, pooled, and then loaded on to a flow cell for sequencing. Prepared libraries are sequenced on any compatible Illumina sequencers.

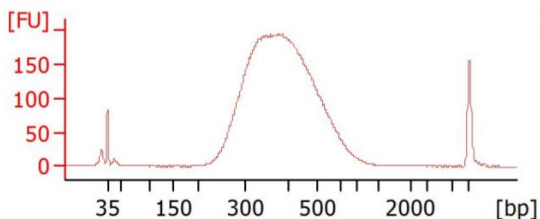


Figure 1. ClinEx pro library Bioanalyzer profile.

## ClinEx pro solution

Comprehensive, accurate analysis of clinically significant genes within human whole exome regions

Analyze a wide range of genetic diseases, including inherited disease-related genes

## SAMPLE PER RUN

| Instrument                 | Samples per run |
|----------------------------|-----------------|
| NextSeq 550 Mid-Output Kit | 4               |
| NextSeq 550High-Output Kit | 14              |
| NovaSeq 6000 SP            | 24              |
| NovaSeq 6000 S1            | 56              |
| NovaSeq 6000 S2            | 144             |
| NovaSeq 6000 S4            | 352             |

*\*the estimated maximum number of samples per cartridge / chip assumes a reading depth of 300x for the germline. The optimal number of samples can be empirically estimated on the local setup*

## Ordering Information

| Product                         | REF                |
|---------------------------------|--------------------|
| ClinEx pro                      | C3030-16 (96 test) |
| ClinEx pro                      | C3030-19 (96 test) |
| <i>For Illumina instruments</i> |                    |
| UDI Primers Set A (96 test)     | 7001               |
| UDI Primers Set B (96 test)     | 7002               |
| UDI Primers Set C (96 test)     | 7003               |
| UDI Primers Set D (96 test)     | 7004               |
| UDI Primers Set 16 (16 test)    | 7005               |

## Attachment

To take a view of the panel genes consult the following attachment:

1. ClinEX\_pro\_genes\_list